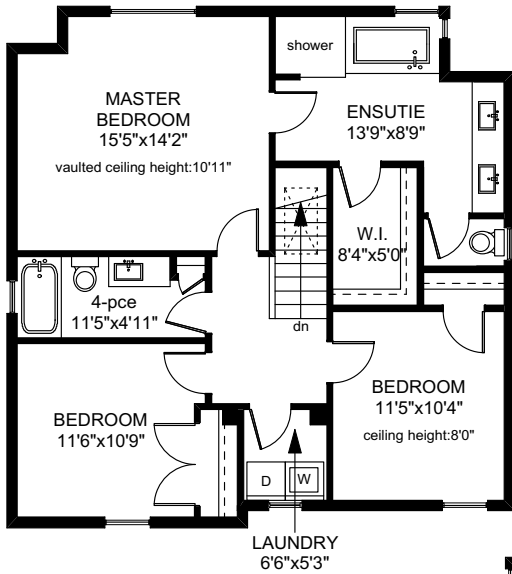
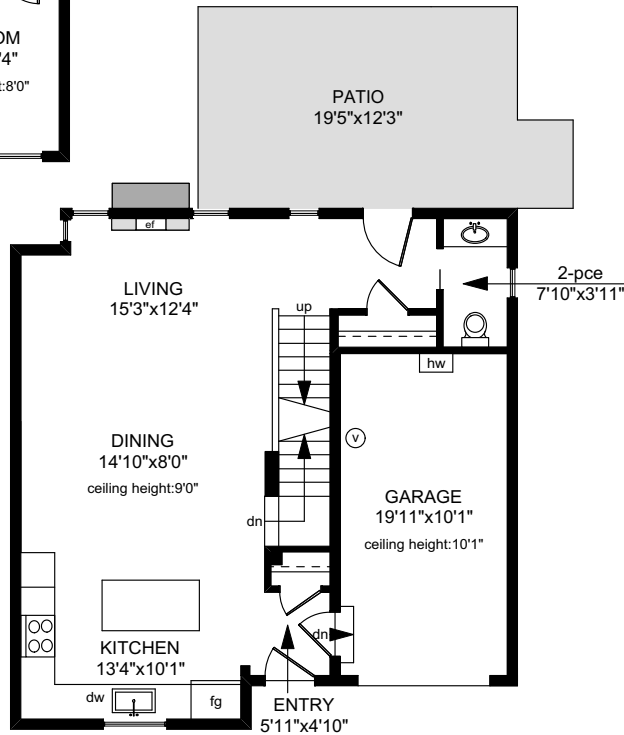


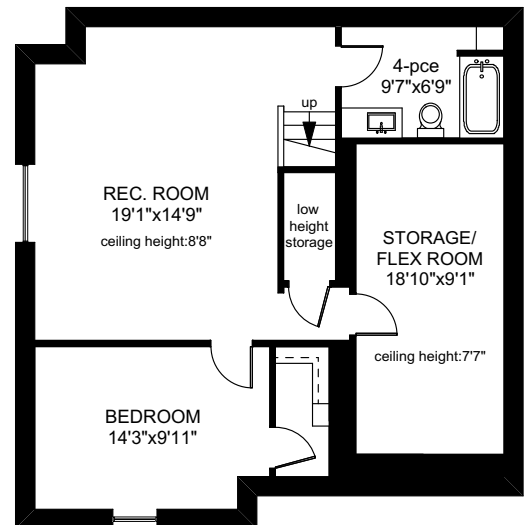
1032 HARLING LANE



UPPER FLOOR
937 SQ.FT

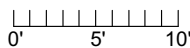


MAIN FLOOR
701 SQ.FT



LOWER FLOOR
937 SQ.FT

	FINISHED SQ. FT.	UNFINISHED SQ. FT.	TOTAL SQ. FT.
MAIN	701	0	701
UPPER	937	0	937
LOWER	937	0	937
TOTAL	2575	0	2575
GARAGE	0	226	226
PATIO	0	256	256



PREPARED FOR THE EXCLUSIVE USE OF
THE NEAL ESTATE TEAM OF RE/MAX ALLIANCE

MEASURED ON: 02/28/19
DRAWING FILE: 17385

Tafmeasure VICTORIA, B.C.
Ph. 883.8894
www.tafmeasure.com